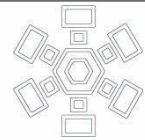
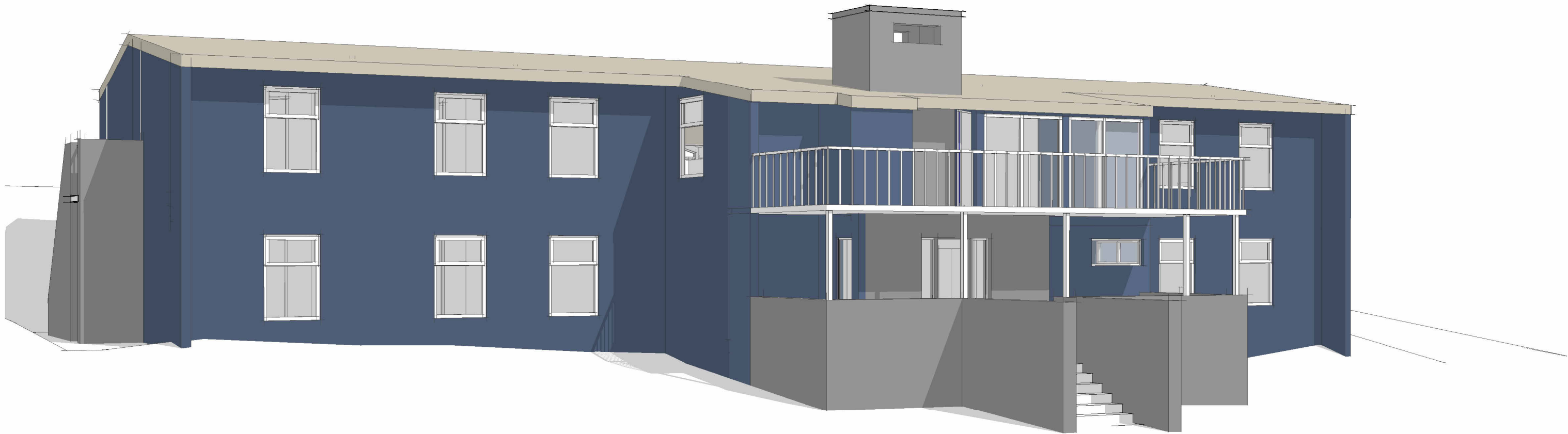


Drawing List

A00.1	Cover Page	1
A01.1	Locality & Site Analysis Plan	1
A02.1	Lower Floor Plan	1
A02.2	Upper Floor Plan	1
A02.3	Existing Sprinkler System Plan	1
A03.1	Elevations 01	1
A03.2	Elevations 02	1
A06.1	Wet Areas 01	1



gunuma lodge

www.gunumalodge.com.au

Figured dimensions to be used in preference to scaled measurements. Contractor must verify all dimensions on site. Copyright: this document is and shall remain the property of Gunuma Lodge. This document may only be used for the purpose for which it was commissioned and is in accordance with the terms of engagement for the commission. Unauthorised use of this document in any way is prohibited ©

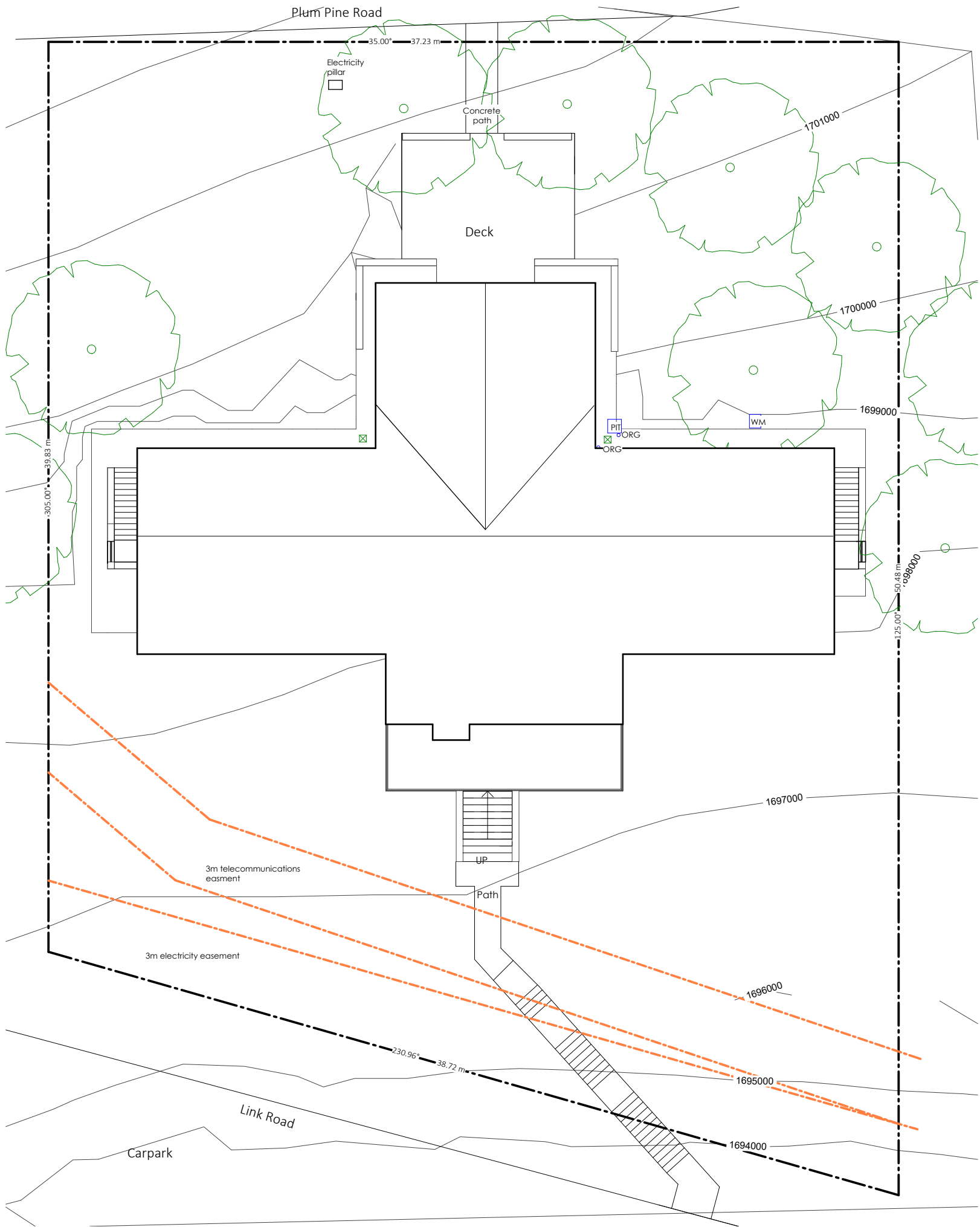
Issue	Description	Date
1	Development Approval	30.6.22

Development  
Application  
South wing bathrooms renovation &  
window replacement

8 Plum Pine Road Smiggin Holes

Cover Page

		A00.1
Date	June 2022	
Drawn by	CP	
Checked by	PR	
		Scale @A2



1  
A01.1  
Site Plan  
1 : 200



View of Lodge from East



View of lodge from West



View of Lodge from North



Locality Map (NTS) North to top  
Lot 24 DP756697  
8 Plum Pine Road  
Smiggin Holes  
Kosciuszko National Park  
Snowy Monaro Regional  
Local Government Area

#### Legend

- SUMP Sump to stormwater
- ORG Overflow relief gully
- WM Water meter

#### Area Schedule

Site:	1681 m <sup>2</sup>
Existing GFA building:	756m <sup>2</sup>
Addition lower floor:	0m <sup>2</sup>
Addition upper floor:	0m <sup>2</sup>
Addition total:	0m <sup>2</sup>

#### Site notes

- Utility locations are approximate only. For precise utility tie locations points refer to Dial Before You Dig.

#### BAL Rating

BAL 12.5



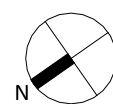
www.gunumalodge.com.au

Figured dimensions to be used in preference to scaled measurements. Contractor must verify all dimensions on site. Copyright: this document is and shall remain the property of Gunuma Lodge. This document may only be used for the purpose for which it was commissioned and is in accordance with the terms of engagement for the commission. Unauthorised use of this document in any way is prohibited ©

Issue	Description	Date
1	Development Approval	30.6.22

## Development Application

South wing bathrooms renovation & window replacement

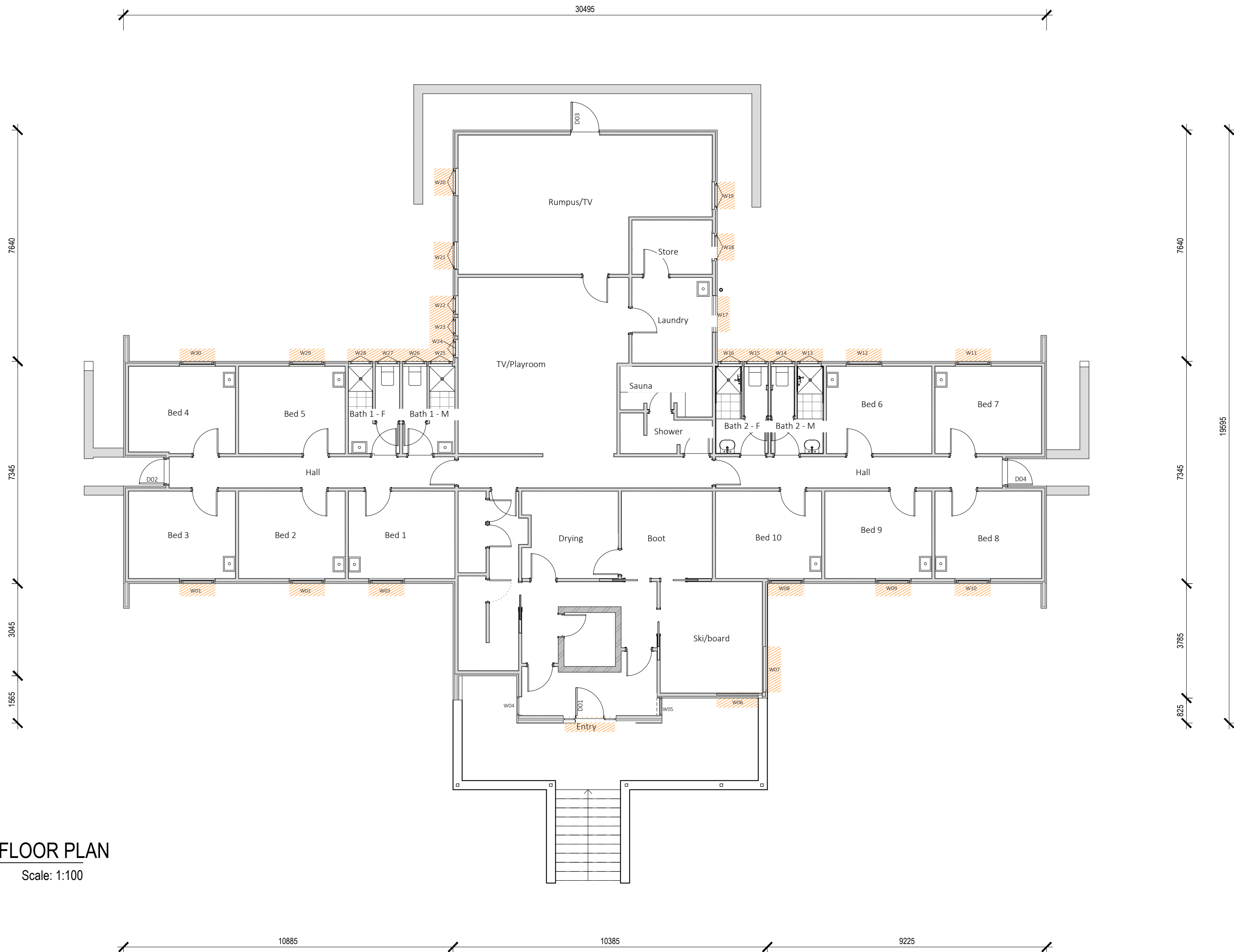


8 Plum Pine Road Smiggin Holes

## Locality & Site Analysis Plan

Date	June 2022	A01.1
Drawn by	CP	
Checked by	PR	
Scale @A2		1 : 200



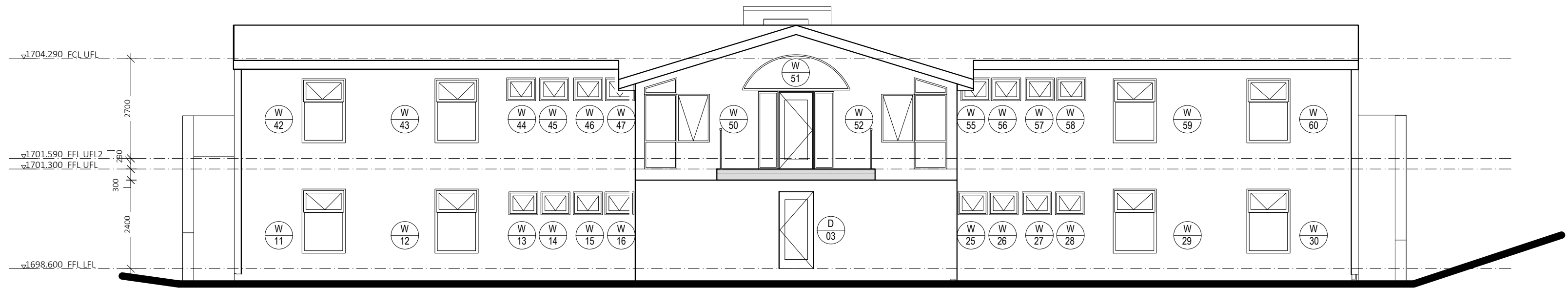


1 GROUND FLOOR PLAN  
Scale: 1:100

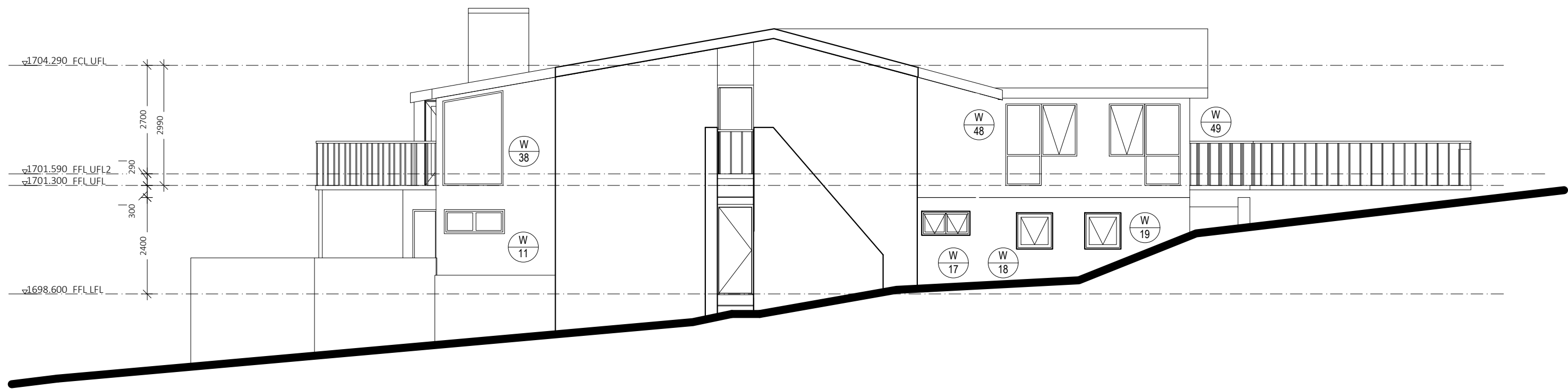


1 FIRST FLOOR PLAN  
Scale: 1:100

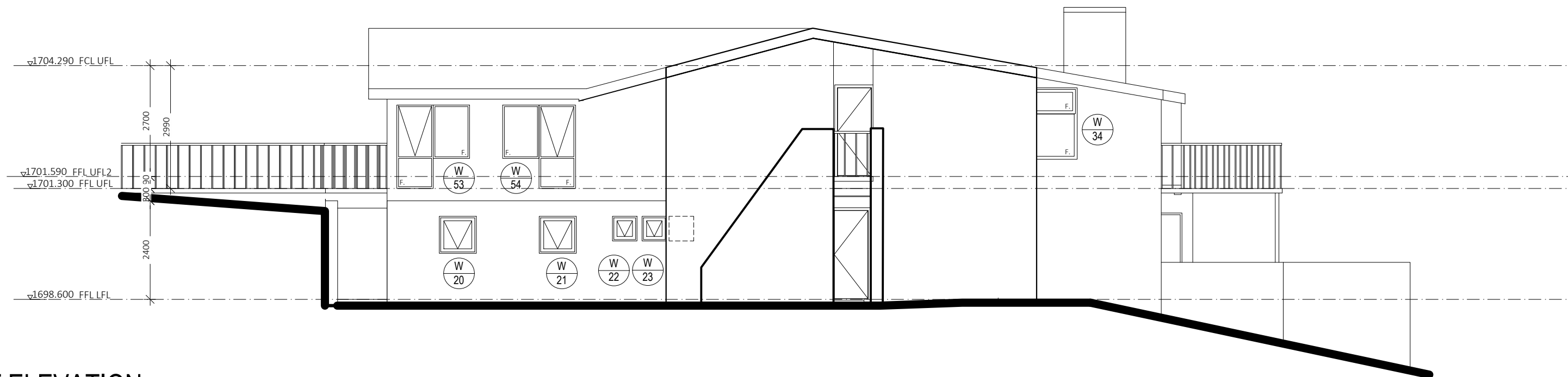
Figured dimensions to be used in preference to scaled measurements. Contractor must verify all dimensions on site.  
Copyright: this document is and shall remain the property of Gunuma Lodge. This document may only be used for the purpose for which it was commissioned and is in accordance with the terms of engagement for the commission.  
Unauthorised use of this document in any way is prohibited ©



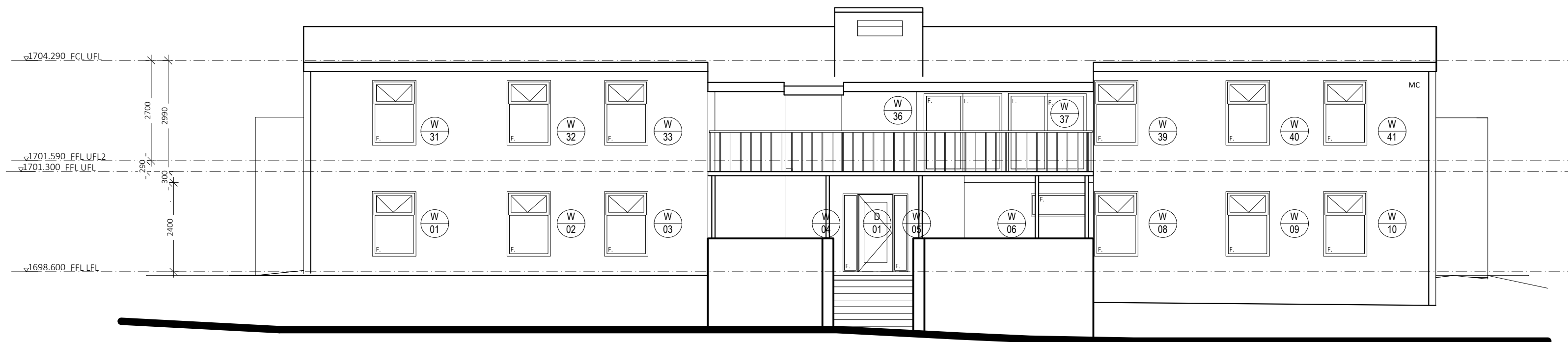
1 NORTH WEST ELEVATION  
Scale: 1:100



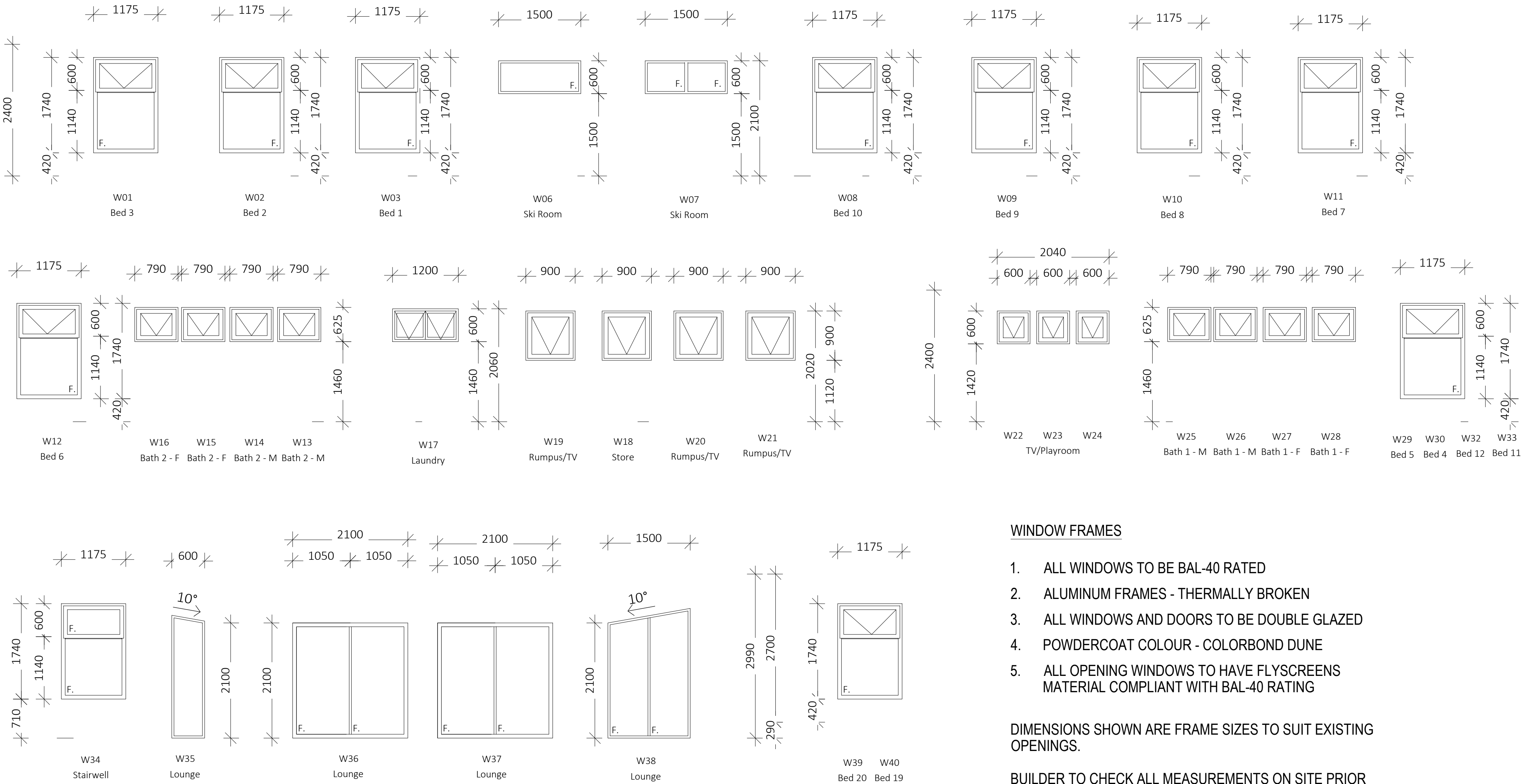
1 SOUTH WEST ELEVATION  
Scale: 1:100



1 NORTH EAST ELEVATION  
Scale: 1:100



1 NORTH WEST ELEVATION  
Scale: 1:100



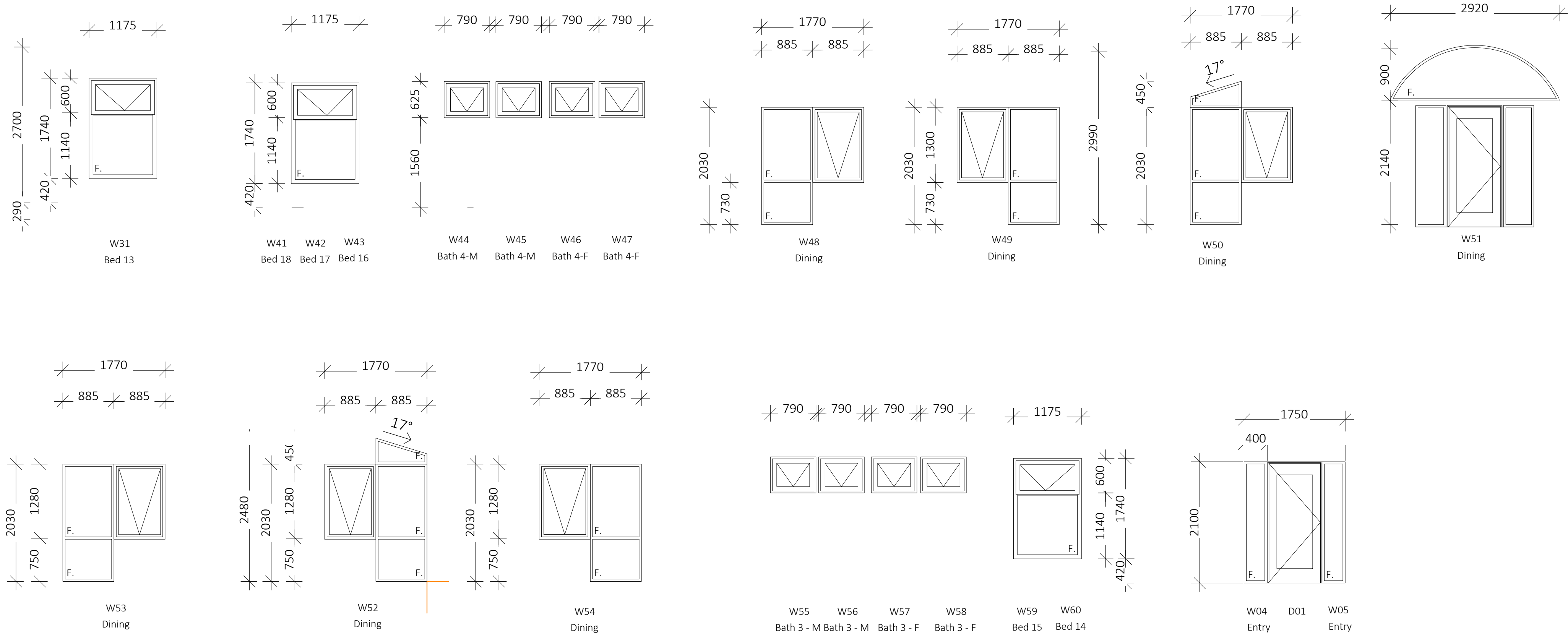
WINDOW FRAMES

- 1. ALL WINDOWS TO BE BAL-40 RATED
- 2. ALUMINUM FRAMES - THERMALLY BROKEN
- 3. ALL WINDOWS AND DOORS TO BE DOUBLE GLAZED
- 4. POWDERCOAT COLOUR - COLORBOND DUNE
- 5. ALL OPENING WINDOWS TO HAVE FLYSCREENS MATERIAL COMPLIANT WITH BAL-40 RATING

DIMENSIONS SHOWN ARE FRAME SIZES TO SUIT EXISTING OPENINGS.

BUILDER TO CHECK ALL MEASUREMENTS ON SITE PRIOR TO ORDERING

1 WINDOW SCHEDULE



WINDOW FRAMES

- 1. ALL WINDOWS TO BE BAL-40 RATED
- 2. ALUMINUM FRAMES - THERMALLY BROKEN
- 3. ALL WINDOWS AND DOORS TO BE DOUBLE GLAZED
- 4. POWDERCOAT COLOUR - COLORBOND DUNE
- 5. ALL OPENING WINDOWS TO HAVE FLYSCREENS MATERIAL COMPLIANT WITH BAL-40 RATING

DIMENSIONS SHOWN ARE FRAME SIZES TO SUIT EXISTING OPENINGS.

BUILDER TO CHECK ALL MEASUREMENTS ON SITE PRIOR TO ORDERING

1 WINDOW SCHEDULE